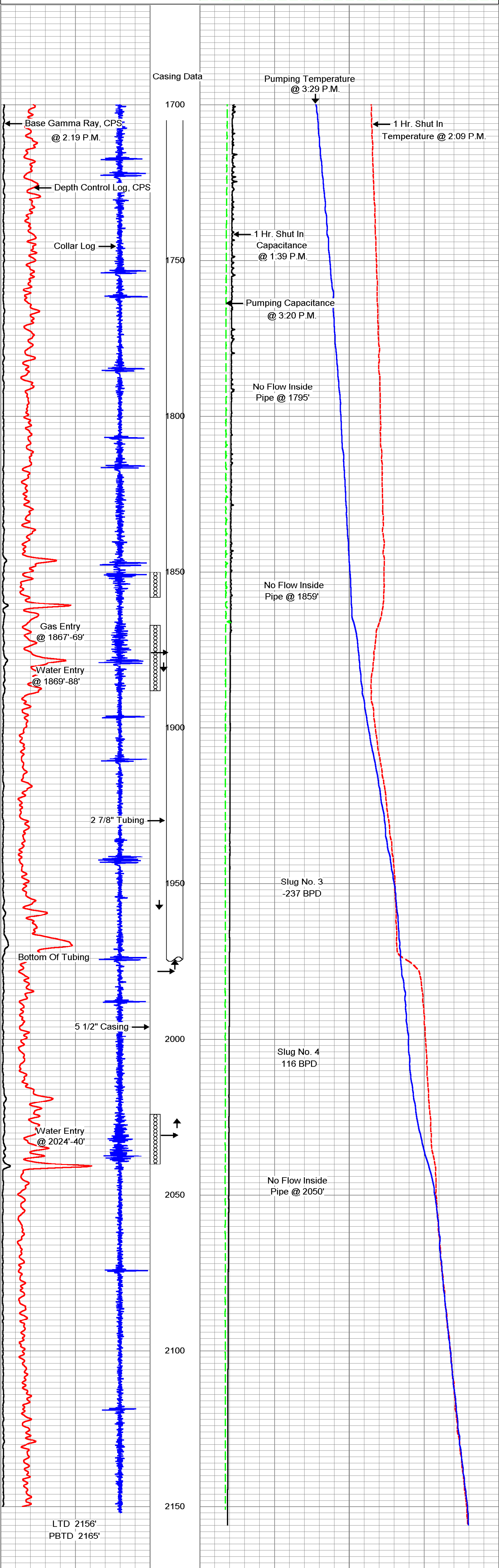


-8	Collar Log	2
-10	Base Gamma Ray, CPS	1000
-10	Depth Control Log, CPS	100

79	Pumping Temperature (degF)	89
79	1 Hr. Shut In Temperature (degF)	89
200	1 Hr. Shut In Capacitance	900
200	Pumping Capacitance	900

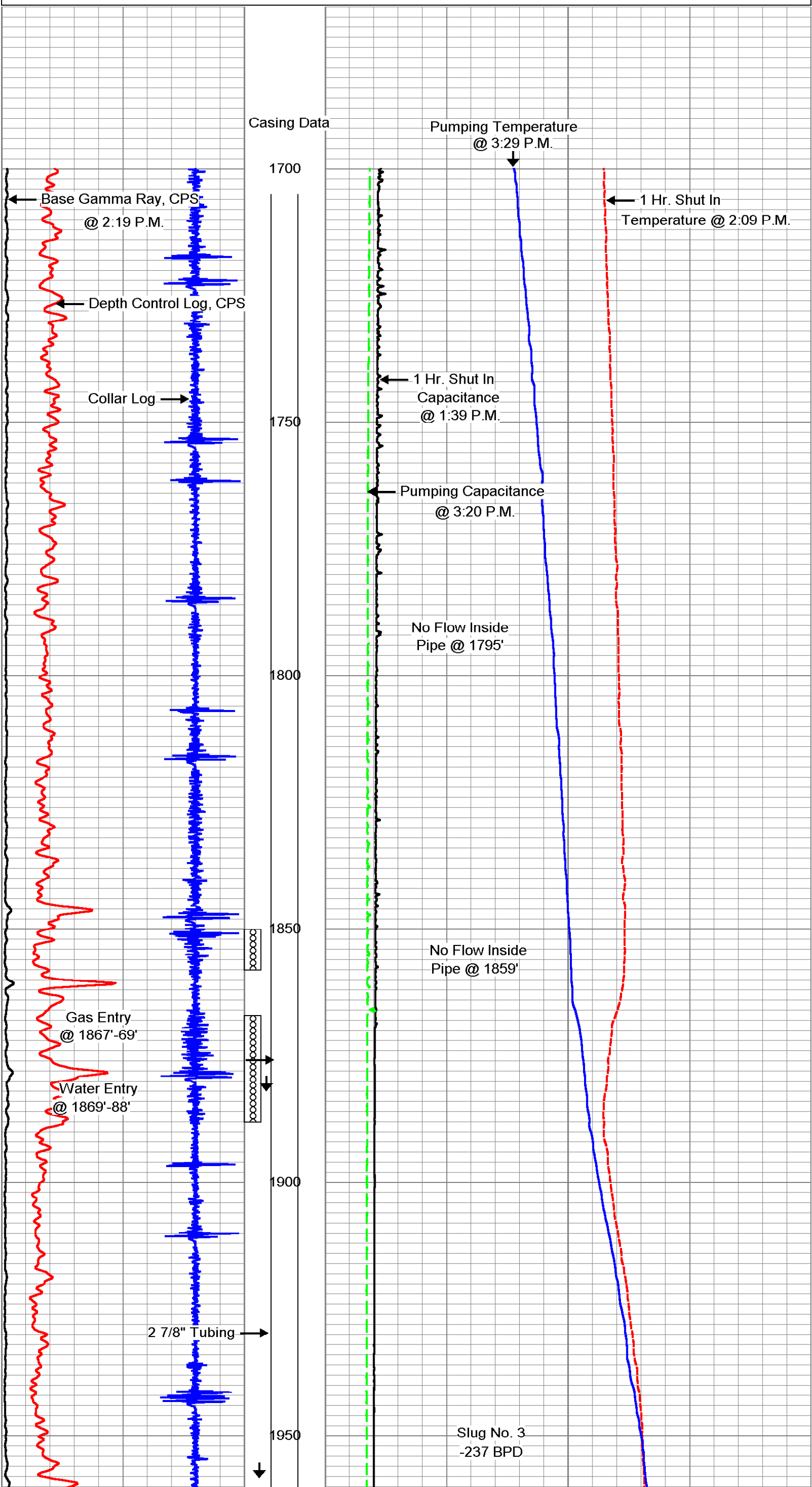


-8	Collar Log	2
-10	Base Gamma Ray, CPS	1000
-10	Depth Control Log, CPS	100

79	Pumping Temperature (degF)	89
79	1 Hr. Shut In Temperature (degF)	89
200	1 Hr. Shut In Capacitance	900
200	Pumping Capacitance	900

-8	Collar Log	2
-10	Base Gamma Ray, CPS	1000
-10	Depth Control Log, CPS	100

79	Pumping Temperature (degF)	89
79	1 Hr. Shut In Temperature (degF)	89
200	1 Hr. Shut In Capacitance	900
200	Pumping Capacitance	900



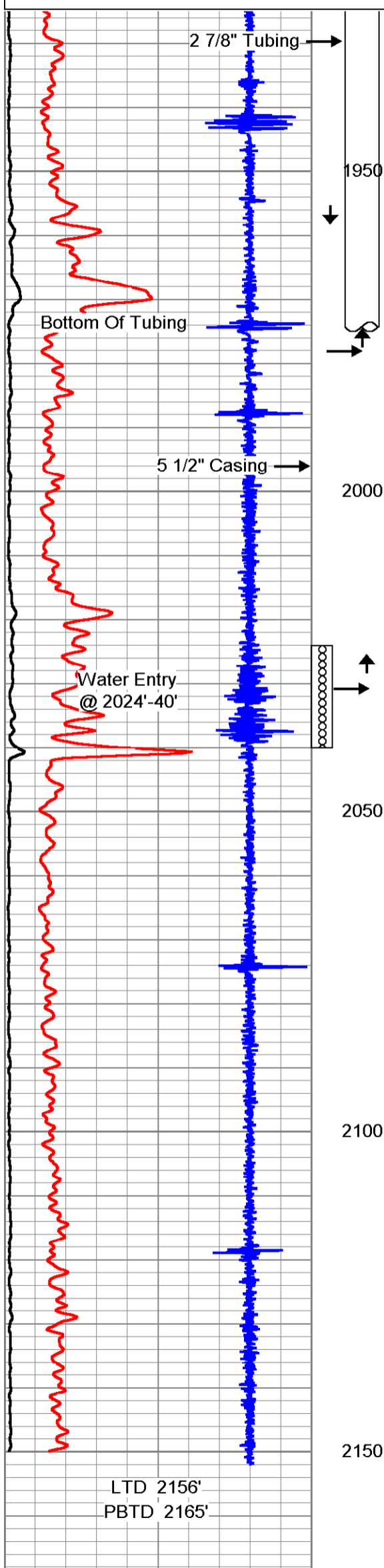
-8	Collar Log	2
-10	Base Gamma Ray, CPS	1000
-10	Depth Control Log, CPS	100

79	Pumping Temperature (degF)	89
79	1 Hr. Shut In Temperature (degF)	89
200	1 Hr. Shut In Capacitance	900
200	Pumping Capacitance	900

Database File: c:\warrion\examples\coalse~1.db
 Dataset Pathname: merge1
 Presentation Format: SC53977
 Dataset Creation: Tue Jul 09 13:30:27 2002
 Charted by: Depth in Feet scaled 1:240

-8	Collar Log	2
-10	Base Gamma Ray, CPS	1000
-10	Depth Control Log, CPS	100

79	Pumping Temperature (degF)	89
79	1 Hr. Shut In Temperature (degF)	89
200	1 Hr. Shut In Capacitance	900
200	Pumping Capacitance	900



-8	Collar Log	2
-10	Base Gamma Ray, CPS	1000
-10	Depth Control Log, CPS	100

79	Pumping Temperature (degF)	89
79	1 Hr. Shut In Temperature (degF)	89
200	1 Hr. Shut In Capacitance	900
200	Pumping Capacitance	900

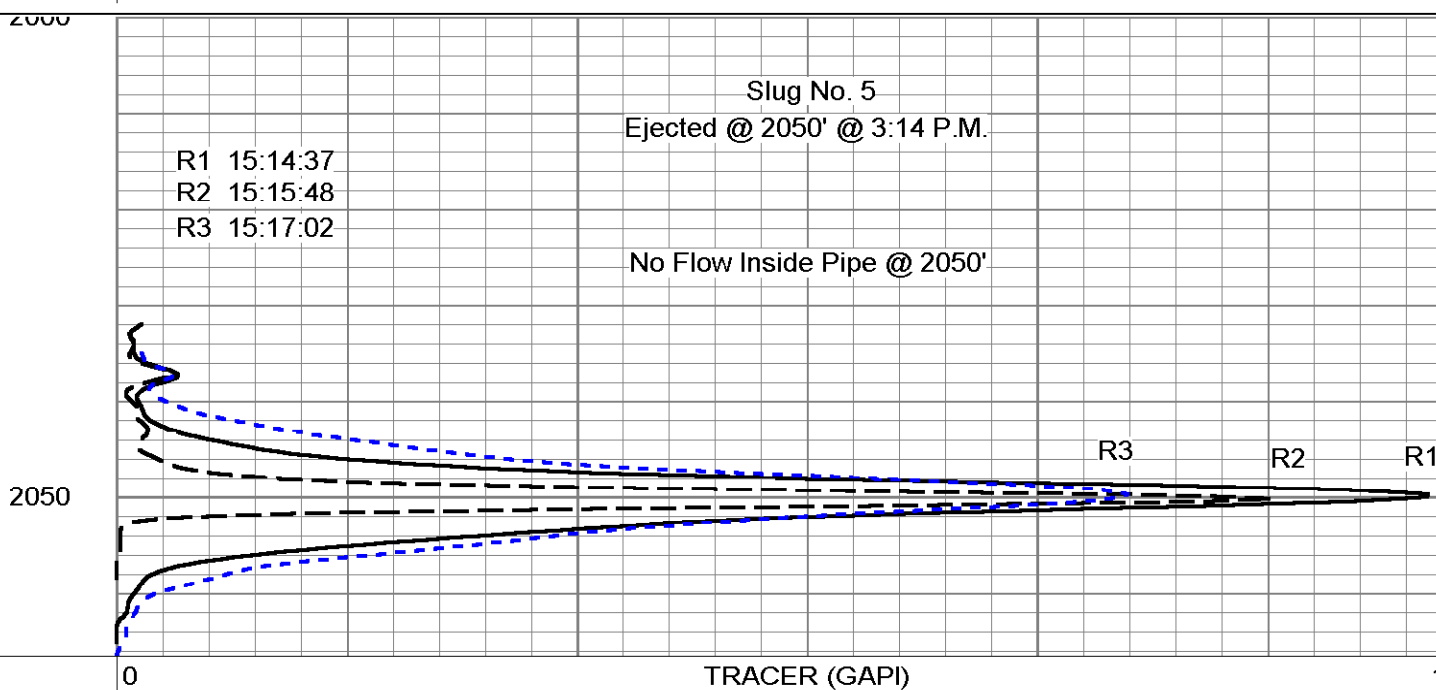
Company:
 Well:
 File: c:\warrior\examples\coalse~1.db
 Dataset: field/well/run1/_tracer/_shottabl_1

VELOCITY FROM TRACER

#	Depth (ft)	Time	D Space (ft)	D Time (sec)	Flow (b/d)	Flow (%)	Delta (b/d)	Delta (%)
31	1793.73	13:37:30	5.00	100000000.00	0.00	0.00		
32	1850.48	13:49:07	5.00	100000000.00	0.00	0.00	0.00	0.00
29	1922.23	13:59:12	8.25	47.68	212.93	0.00	-212.93	0.00
30	1934.61	14:00:43	17.25	85.26	248.99	0.00	-36.05	0.00
33	1950.61	14:02:11	18.00	88.96	249.00	0.00	-0.01	0.00
34	2001.97	14:11:03	3.00	63.34	91.14	0.00	157.86	0.00
35	2004.73	14:10:06	2.50	59.30	81.12	0.00	10.02	0.00
36	2006.98	14:09:19	4.00	43.26	177.91	0.00	-96.79	0.00
37	2046.24	14:14:44	5.00	100000000.00	0.00	0.00	177.91	0.00

Database File: c:\warrior\examples\coalse~1.db
 Dataset Pathname: _profile5_
 Presentation Format: TRCPROF
 Dataset Creation: Tue Jul 09 14:17:28 2002
 Charted by: Depth in Feet scaled 1:240

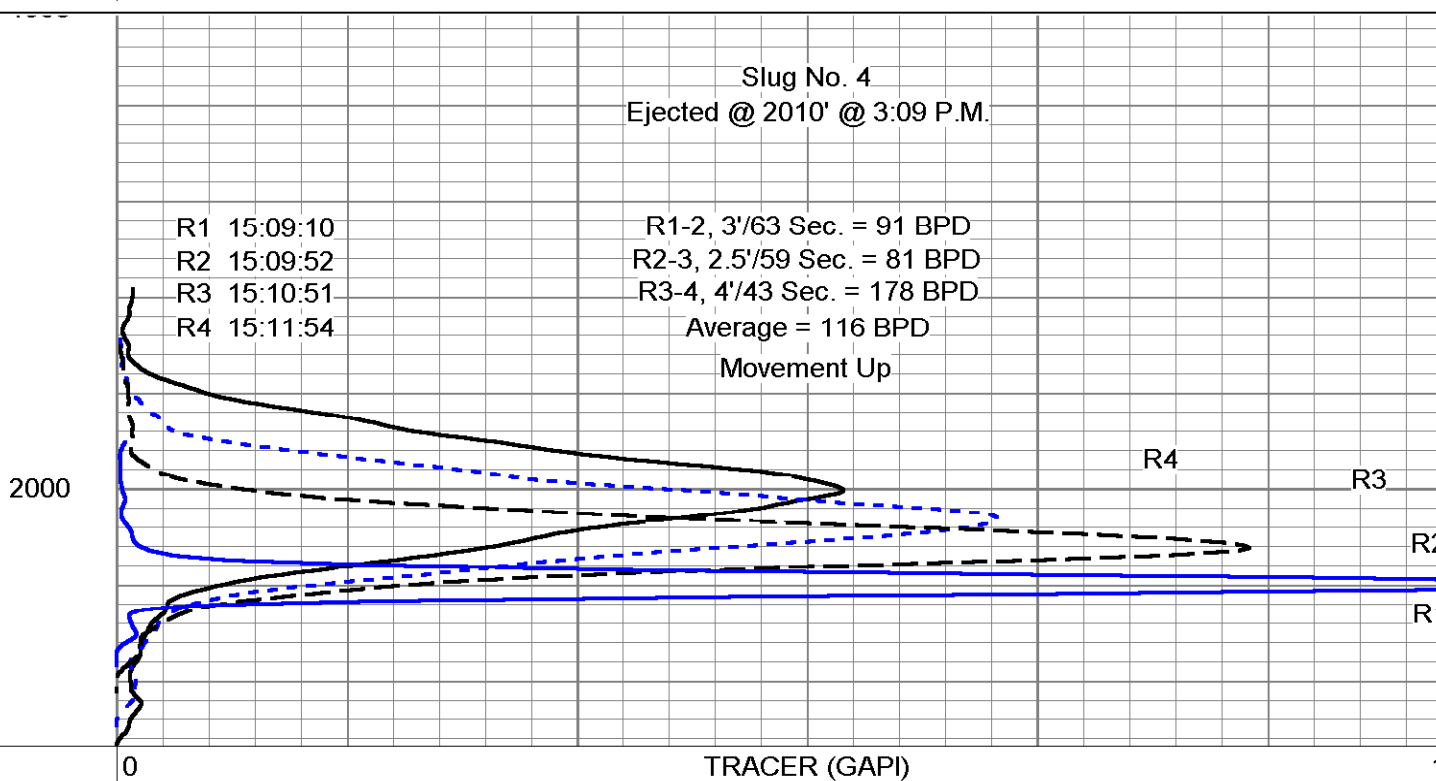
0 TRACER (GAPI) 1500



0 TRACER (GAPI) 1500

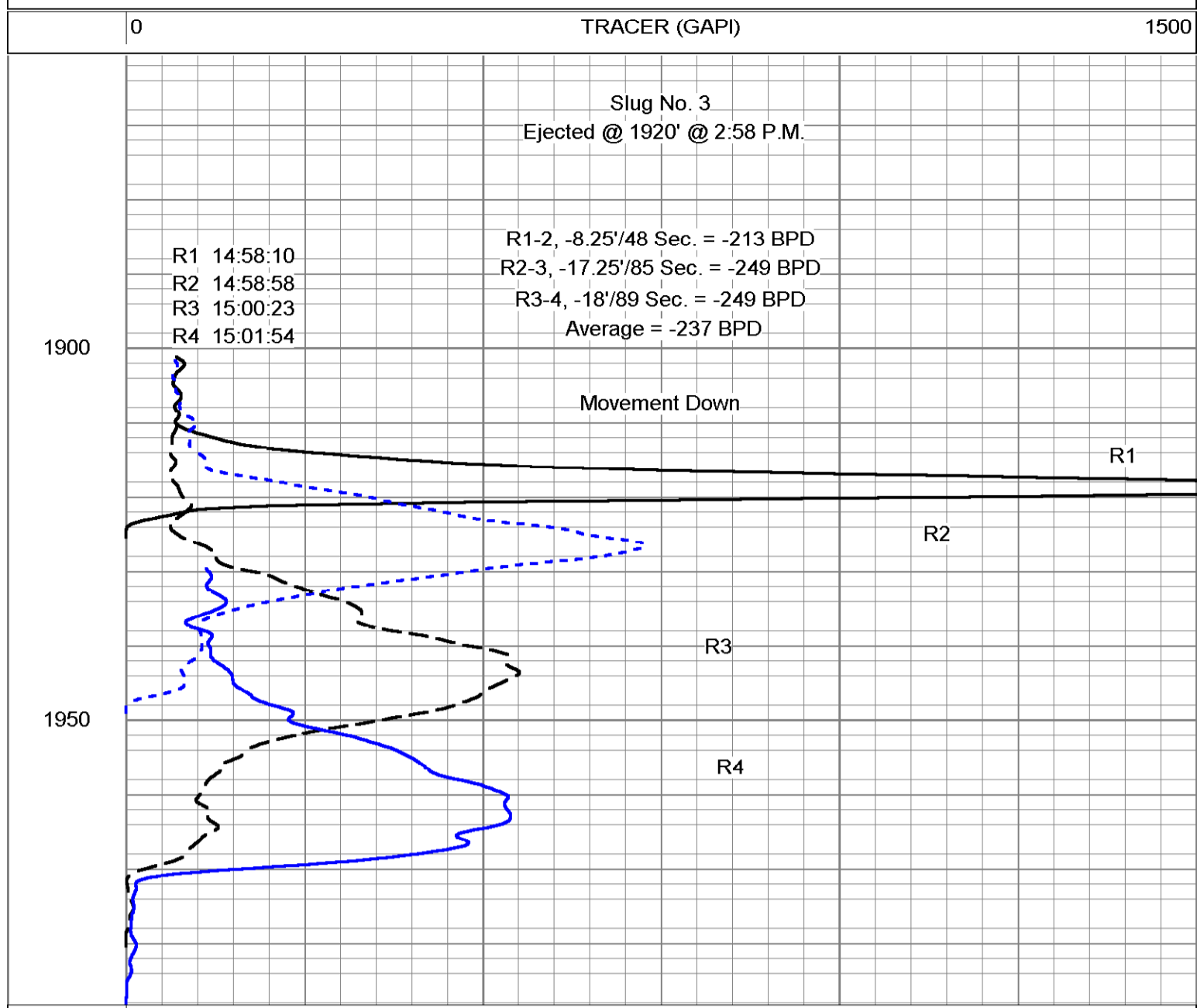
Database File: c:\warrior\examples\coalse~1.db
 Dataset Pathname: _profile4_
 Presentation Format: TRCPROF
 Dataset Creation: Tue Jul 09 14:12:18 2002
 Charted by: Depth in Feet scaled 1:240

0 TRACER (GAPI) 1500

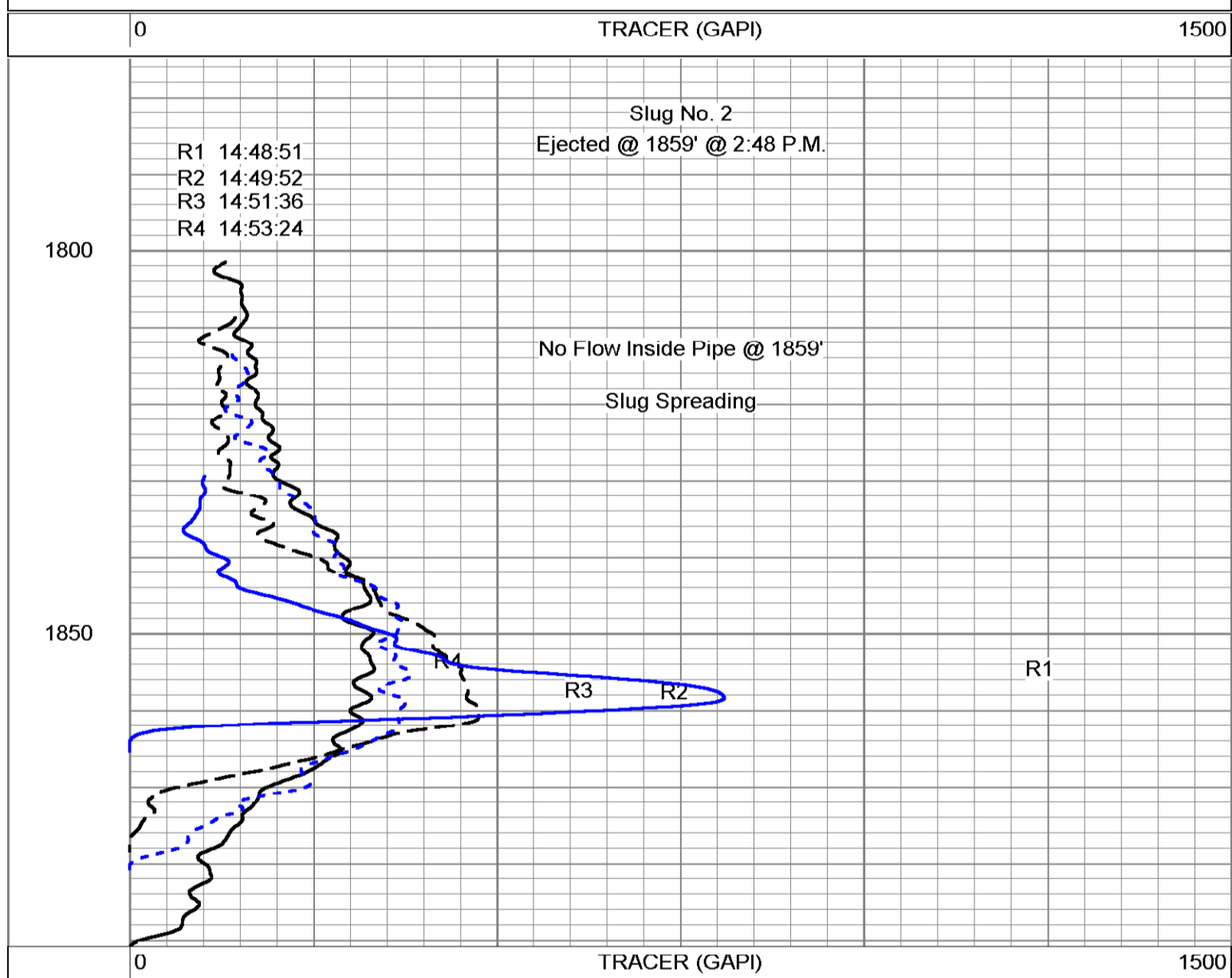


0 TRACER (GAPI) 1500

Database File: c:\warrior\examples\coalse~1.db
 Dataset Pathname: _profile3_
 Presentation Format: TRCPROF
 Dataset Creation: Tue Jul 09 14:02:35 2002
 Charted by: Depth in Feet scaled 1:240



Database File: c:\warrior\examples\coalse~1.db
 Dataset Pathname: _profile2_
 Presentation Format: TRCPROF
 Dataset Creation: Tue Jul 09 13:54:05 2002
 Charted by: Depth in Feet scaled 1:240



Database File: c:\warrior\examples\coalse~1.db
 Dataset Pathname: _profile1_
 Presentation Format: TRCPROF
 Dataset Creation: Tue Jul 09 13:46:23 2002
 Charted by: Depth in Feet scaled 1:240

